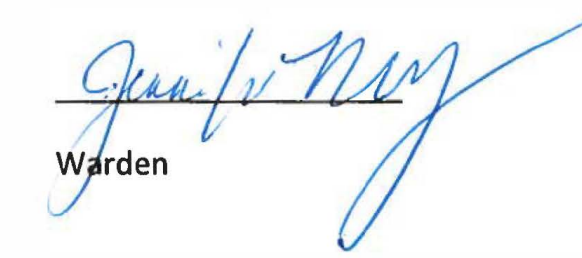
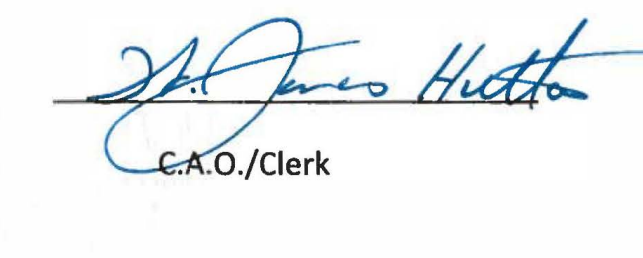


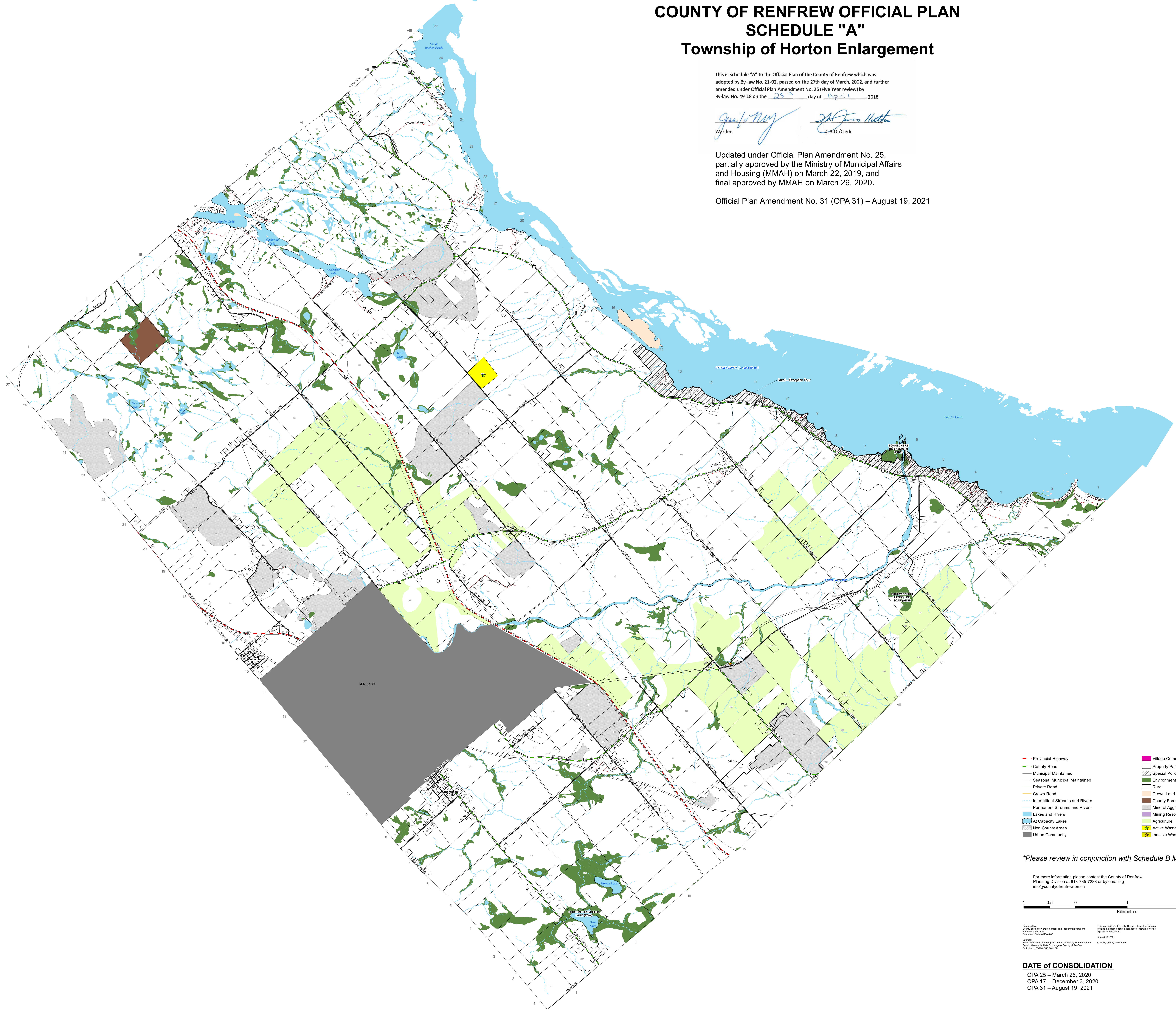
COUNTY OF RENFREW OFFICIAL PLAN SCHEDULE "A" Township of Horton Enlargement

This is Schedule "A" to the Official Plan of the County of Renfrew which was adopted by By-law No. 21-02, passed on the 27th day of March, 2002, and further amended under Official Plan Amendment No. 25 (Five Year review) by By-law No. 49-18 on the 25th day of April, 2018.

 Warden
 C.A.O./Clerk

Updated under Official Plan Amendment No. 25, partially approved by the Ministry of Municipal Affairs and Housing (MMAH) on March 22, 2019, and final approved by MMAH on March 26, 2020.

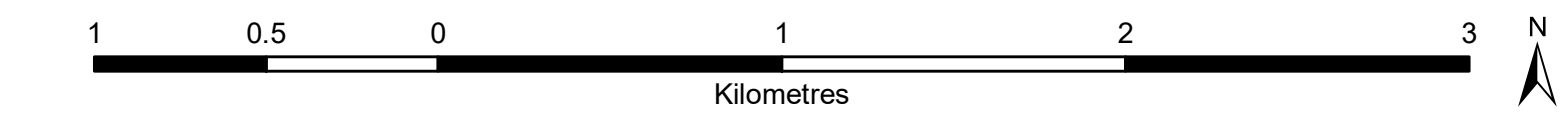
Official Plan Amendment No. 31 (OPA 31) – August 19, 2021



- | | |
|---------------------------------|--------------------------------|
| Provincial Highway | Village Community |
| County Road | Property Parcels |
| Municipal Maintained | Special Policy Exception Areas |
| Seasonal Municipal Maintained | Environmental Protection Area |
| Private Road | Rural |
| Crown Road | Crown Land |
| Intermittent Streams and Rivers | County Forest |
| Permanent Streams and Rivers | Mineral Aggregate |
| Lakes and Rivers | Mining Resource |
| At Capacity Lakes | Agriculture |
| Non County Areas | Active Waste Disposal Site |
| Urban Community | Inactive Waste Disposal Site |

Please review in conjunction with Schedule B Maps

For more information please contact the County of Renfrew Planning Division at 613-735-7288 or by emailing info@countyrenfrew.on.ca



Prepared by:
 County of Renfrew Development and Property Department
 Planning and Design Services
 August 19, 2021
 Date: 2021-08-19
 County of Renfrew
 Planning and Design Services

DATE OF CONSOLIDATION
 OPA 25 – March 26, 2020
 OPA 17 – December 3, 2020
 OPA 31 – August 19, 2021