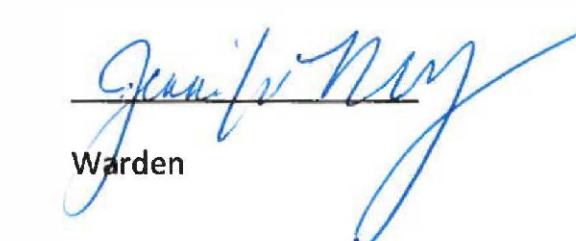
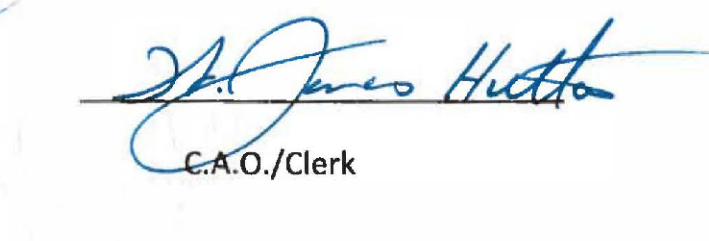


COUNTY OF RENFREW OFFICIAL PLAN SCHEDULE "B" - Map 3 Mineral Aggregate and Mining Resource Map

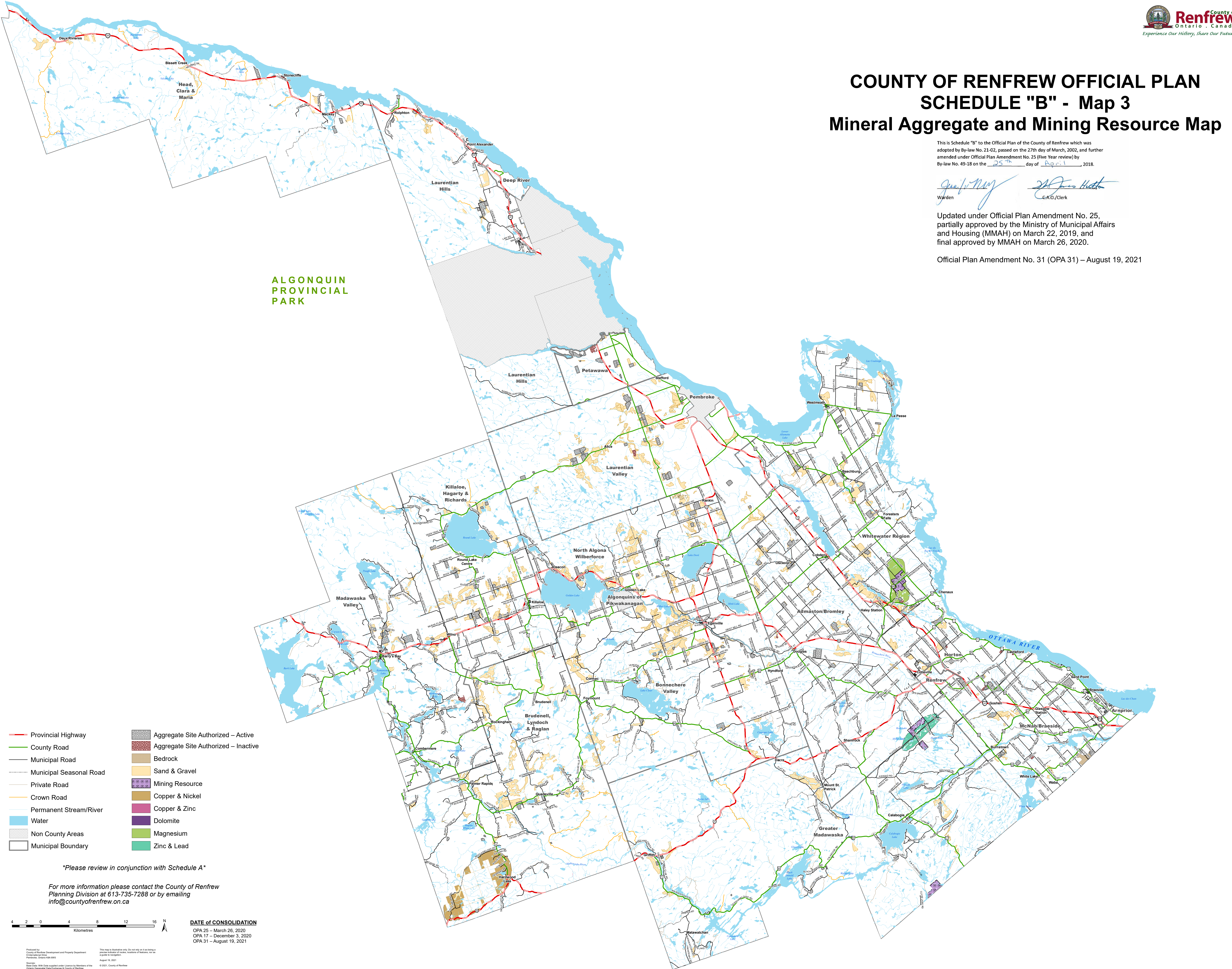
This is Schedule "B" to the Official Plan of the County of Renfrew which was adopted by By-law No. 21-02, passed on the 27th day of March, 2002, and further amended under Official Plan Amendment No. 25 (Five Year review) by By-law No. 49-18 on the 25th day of August, 2018.

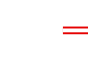


 Warden
 C.A.O./Clerk

Updated under Official Plan Amendment No. 25, partially approved by the Ministry of Municipal Affairs and Housing (MMAH) on March 22, 2019, and final approved by MMAH on March 26, 2020.

Official Plan Amendment No. 31 (OPA 31) – August 19, 2021

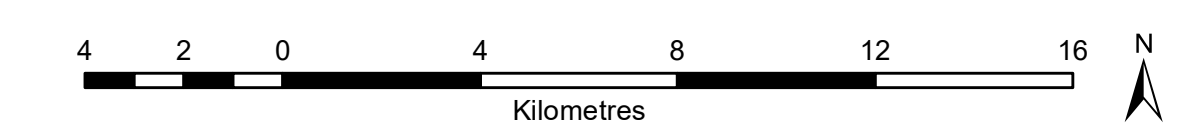
ALGONQUIN
 PROVINCIAL
 PARK



- | | |
|---|--|
|  Provincial Highway |  Aggregate Site Authorized – Active |
|  County Road |  Aggregate Site Authorized – Inactive |
|  Municipal Road |  Bedrock |
|  Municipal Seasonal Road |  Sand & Gravel |
|  Private Road |  Mining Resource |
|  Crown Road |  Copper & Nickel |
|  Permanent Stream/River |  Copper & Zinc |
|  Water |  Dolomite |
|  Non County Areas |  Magnesium |
|  Municipal Boundary |  Zinc & Lead |

Please review in conjunction with Schedule A

For more information please contact the County of Renfrew Planning Division at 613-735-7288 or by emailing info@countyofrenfrew.on.ca



DATE OF CONSOLIDATION
 OPA 25 – March 26, 2020
 OPA 17 – December 3, 2020
 OPA 31 – August 19, 2021

Prepared by: County of Renfrew Development and Property Department
 Information Date: Pending, OPA 31-2021
 Date: August 19, 2021
 Base Data: With Data supplied under License by Members of the Ontario Geological Data Catalogue & County of Renfrew
 Projection: UTM NAD83 Zone 18
 © 2021, County of Renfrew