

COUNTY OF RENFREW OFFICIAL PLAN

SCHEDULE "B" - Map 5

Laurentian Valley – Prime Agricultural Areas

This is Schedule "A" to the Official Plan of the County of Renfrew which was adopted by By-law No. 21-02, passed on the 27th day of March, 2002, and further amended under Official Plan Amendment No. 25 (Five Year review) by By-law No. 49-18 on the 25th day of April, 2018.

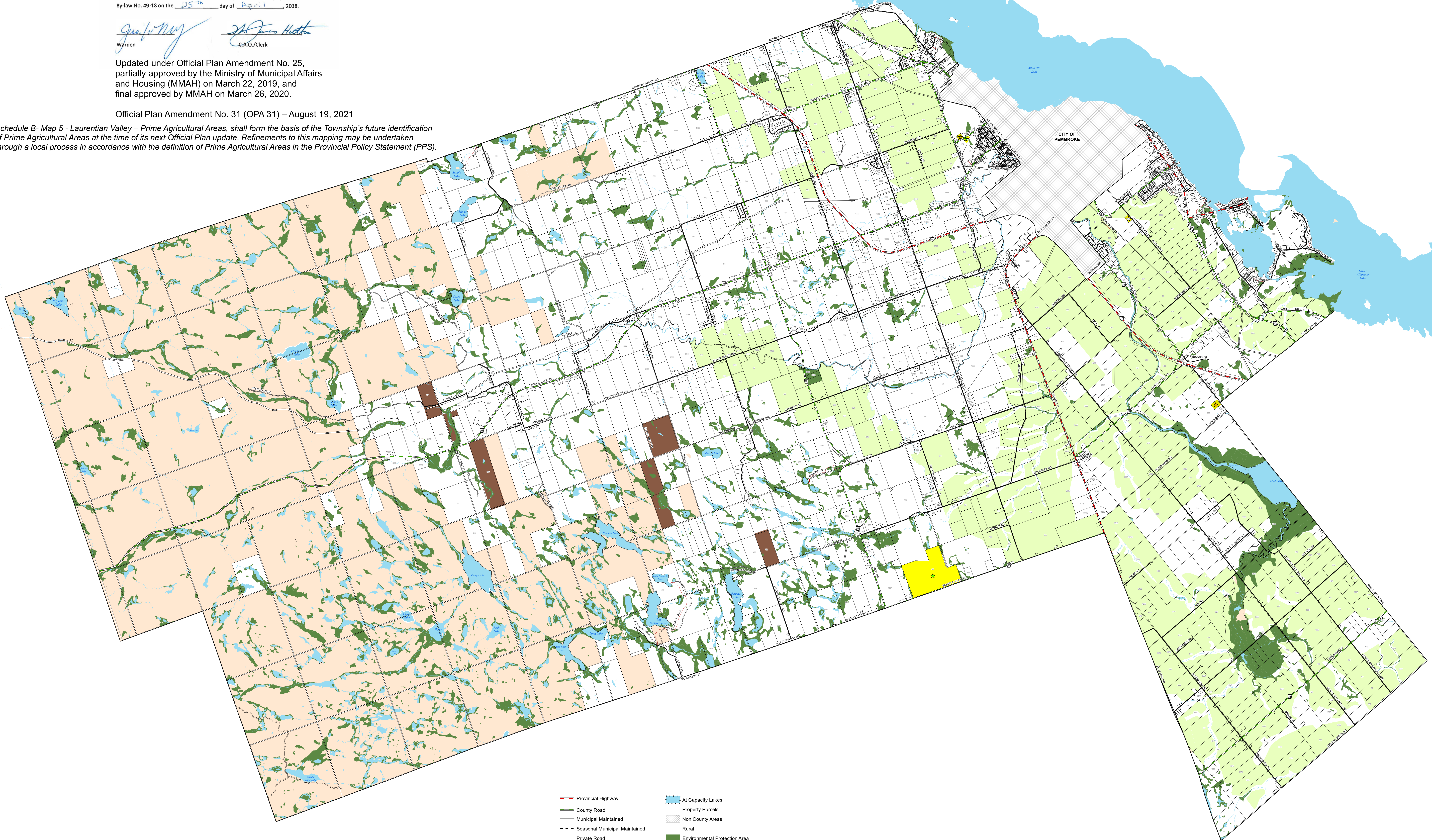
[Signature]
Warden

[Signature]
C.A.O./Clerk

Updated under Official Plan Amendment No. 25, partially approved by the Ministry of Municipal Affairs and Housing (MMAH) on March 22, 2019, and final approved by MMAH on March 26, 2020.

Official Plan Amendment No. 31 (OPA 31) – August 19, 2021

Schedule B- Map 5 - Laurentian Valley – Prime Agricultural Areas, shall form the basis of the Township's future identification of Prime Agricultural Areas at the time of its next Official Plan update. Refinements to this mapping may be undertaken through a local process in accordance with the definition of Prime Agricultural Areas in the Provincial Policy Statement (PPS).



- Provincial Highway
- County Road
- Municipal Maintained
- Seasonal Municipal Maintained
- Private Road
- Crown Road
- Intermittent Streams and Rivers
- Permanent Streams and Rivers
- Lakes and Rivers
- Agriculture
- At Capacity Lakes
- Property Parcels
- Non County Areas
- Rural
- Environmental Protection Area
- Crown Land
- County Forest
- Active Waste Disposal Site
- Inactive Waste Disposal Site

For more information please contact the County of Renfrew Planning Division at 613-735-7288 or by emailing info@countyofrenfrew.on.ca



DATE of CONSOLIDATION
 OPA 25 – March 26, 2020
 OPA 17 – December 3, 2020
 OPA 31 – August 19, 2021

Prepared by:
County of Renfrew, Development and Property Department
300 Wellington Drive
Pembroke, Ontario K0A 0S0

This map is illustrative only. Do not rely on it as being a precise depiction of facts, locations or features, for an update to navigation.

Source:
Base Data: 2018 Data supplied under license by Numbers of the Ontario Geographic Data Exchange & County of Renfrew
Proprietary GIS Software: Esri

August 19, 2021
© 2021, County of Renfrew