

2021 ANNUAL REPORT FOR ACTIVITIES IN RENFREW COUNTY FOREST

AND SUMMARY OF THE FIRST 5-YEAR TERM OF THE 2017-2026 FOREST MANAGEMENT PLAN

PREPARED BY L. ROSE, R.P.F., ON JANUARY 11, 2022

HARVEST

Timber sales for 2021 harvest activities were advertised in November 2020. Successful bids were received for two out of four sales. Bids were not received for Round Lake (red pine), or Ruby (natural mixedwood). In addition, a multi-year contract awarded in 2019 was finished in 2021 (Opeongo). Some revenue from Germanicus was applied to 2021, from a short-term extension provided in 2020 due to extenuating circumstances. A summary is provided in Table 1.

Harvesting activities took place in almost all seasons of 2021, with the exception of spring melt, species at risk and recreational timing restrictions. No major operational issues occurred, but because of a number of complexities, one block required an extension into 2022 to complete harvest and hauling. As a result, some revenue for Brudenell Tract will apply to 2022.

Approximately 12 local residents were employed on the Renfrew County Forest (RCF) in 2021¹, on tendered harvest operations, cutting and skidding or forwarding wood, building roads, processing timber on site, supervising operations, and hauling logs to mills.

Two County of Renfrew staff completed all planning (timber cruising, analysis, prescription writing), layout, tree marking, tendering, wood measurement and operations monitoring activities.



Figure 1. Plantation Thinning at Byer's Creek Tract

Table 1. Summary of 2021 Harvest Activities in RCF

Tract	Harvest Type	Area (ha)	Volume (m3)	Revenue (\$)
Opeongo (11-19)	Poplar/Mixedwood Clearcut, shelterwood; Multiple year harvest finished in 2021 ²	82 ³	6,888	71,502.06
Germanicus (19-20)	Red Pine Thinning; small extension into 2021 ⁴	12	171	5,513.16
Byer's Creek (01-21)	Red Pine Thinning	21	1,457	81,575.42
Brudenell (02-21)	Red Pine Thinning	21 ⁵	1,298	66,305.56
Total for 2021		136	9,814	224,896.20

RENEWAL

Tending occurred on 16 hectares of red and white pine, planted in 2017-18 at Crooked Fence, Byer's Creek and Sernoskie Tracts. Tending was prescribed based on the competition level of faster-growing species growing overtop of planted trees. Tending was carried out by contractor workers with brush saws to ensure the success of the investment already made to grow pine back on the sites, with site preparation and tree planting. The cost of this tending treatment was \$10,848.

¹ During active operations, employed by successful bidders.

² \$76,960.29 of revenue was generated in 2020 in the first year of operations, 2020.

³ Approximate. About half of total allocated area (162ha) was harvested in 2020.

⁴ \$21,148.20 was generated in 2020.

⁵ Approximate. The total area for this tender is 26ha, the remainder will be cut in 2022.

EDUCATION & OUTREACH

Although in-person outreach was limited due to COVID-19 restrictions, education and outreach activities continued as we adapted to a more virtual format. Opportunities were taken to positively promote sustainable forest management that occurs on RCF, as well as in Renfrew County as a whole, when staff time permits.

- Staff presented virtually to Fleming College's Forestry Technician program about Renfrew County Forests and plantation management and an online visit to "The Global Classroom" to talk about forest management.
- The Forest Products Association of Canada (FPAC) visited Renfrew County Forests with a film crew to create a [virtual media tour](#) for dissemination in conjunction with their [Forestry for the Future](#) campaign.
- Staff hosted a forest operations tour for participants in three iterations of Algonquin College's [Job Seekers - Pembroke Campus \(algonquincollege.com\)](#) 4-week program.
- The County Forester participated for the second year on a "Dream Maker Panel", a virtual Career Discovery Expo. The event is for young women (grades 7-12) and their parents in Renfrew County to explore career pathways in skilled trades, Science, technology, engineering, and mathematics (STEM), emergency response, entrepreneurship, and advancing women in society.

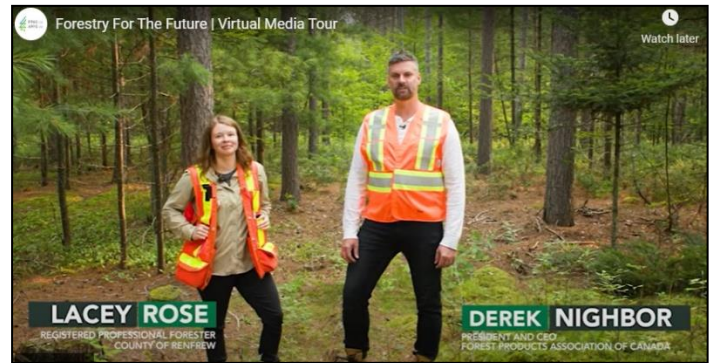


Figure 2. Virtual Media Tour of Renfrew County Forest with FPAC

OTHER

Forest health and invasive species continue to be major topics in Renfrew County forests in 2021. *Lymantria dispar dispar* (LDD) moth was the main concern and resulted in numerous public and municipal inquiries. The spread of Emerald Ash Borer (EAB) continues, with more positive traps outside the mapped infestation area. Staff assisted Natural Resources Canada researchers with a biocontrol trial for EAB by releasing parasitic wasps in the selected area. Control of invasive garlic mustard (manual pulling) by staff at the Centennial Lake Tract occurred for a second year. This will be an ongoing project. A small, lightning-origin fire occurred at Opeongo Line Tract, originated by lightning strike on adjacent private land. The fire was contained and extinguished by municipal fire crews and less than 1 acre on County land was burned. A forest health report was prepared by County staff to summarize the major events of the year. The report will be made available to the public on the [County of Renfrew Website](#).

County staff, on behalf of the County, submitted comments on three postings on the Environmental Registry of Ontario: two related to protection of Black Ash under the Endangered Species Act and comments in support of Ontario's Draft Forest Biomass Action Plan.

With more people on the landscape in the current pandemic climate we are in, there was an increase in access complaints, dumping, trespass concerns and other issues.



Figure 3. LDD Moth Egg Masses, Sperberg



Figure 4. EAB Parasitoid Release



Figure 5. Forest Fire at Opeongo

SUMMARY OF THE FIRST 5-YEAR TERM OF THE 2017-2026 FOREST MANAGEMENT PLAN

The end of 2021 marks the midpoint in the 2017-2026 Forest Management Plan (FMP) for the Renfrew County Forest. Progress has been made toward planned goals for harvest levels, revenue and renewal activities. Harvest volume, area, revenue and renewal area and expenditures for the first five years of the plan are summarized in Table 2.

2017-2021 HARVEST

Less area was harvested over the 2017-2021 term than planned. 583 hectares were harvested, whereas the FMP forecasts 801 hectares. The main reason for this difference is the inability to market low-end material (e.g. areas with a high component of pulpwood), making the tendering of natural mixedwood stands a challenge. In most cases, the natural mixedwood areas that were harvested took several attempts to sell. Another contributing factor was the updating of the forest inventory in conjunction with field work to prepare Forest Operation Prescriptions (FOP). This in-depth work usually leads to the exclusion of area from harvest plans, either because it is not yet ready for harvest, is inaccessible due to terrain or water, or is reserved for the protection of other forest values.

Although harvest area and volume was less than planned, revenue from timber on RCF was higher than planned for the 5-year term. Forecast revenue in the FMP is \$180,000/year, whereas actual revenue has been an average of \$197,524/year. Red pine plantations continue to be the main revenue generator for the RCF, and are generally successfully tendered. Bid prices for red pine have been on the rise over the past two years, which has increased the revenue per hectare of plantation area.

2017-2021 RENEWAL

The area eligible for artificial regeneration treatment is directly related to the area and forest type where forest management occurs. Since 2017, no area has been harvested that would benefit from artificial regeneration treatments (e.g. tree planting): all area harvested was either a commercial thinning treatment in a plantation area, a naturally-regenerating forest type (e.g. poplar clearcut), or a shelterwood area limited by size (<3 hectares) or accessibility. Area where renewal activities occurred in the 5-year plan term were harvested prior to 2017. There will be an increase in the amount of renewal activity in the next 5-year term, as harvest is planned for area that will require tree planting.

Table 2. Summary of Activities in the RCF, 2017-2021

Year	Total volume (m3)	Total Harvest Area (ha)	Total Revenue (\$)	Renewal Area (ha)	Renewal Expenditure (\$)
2017	6,049	76	205,932	21.5	17,029
2018	11,189	125	255,293	4.4	5,980
2019	5,081	74	97,758	0.5	702
2020	12,517	172	203,740	0	-
2021	9,814	136	224,896	16.0	10,848
Actual 5-Year Total	44,650	583	987,619	42.4	34,559
Actual Average per year	8,930	117	197,524	8.5	6,912
Planned in FMP per year	13,052	160	180,000	13	26,000

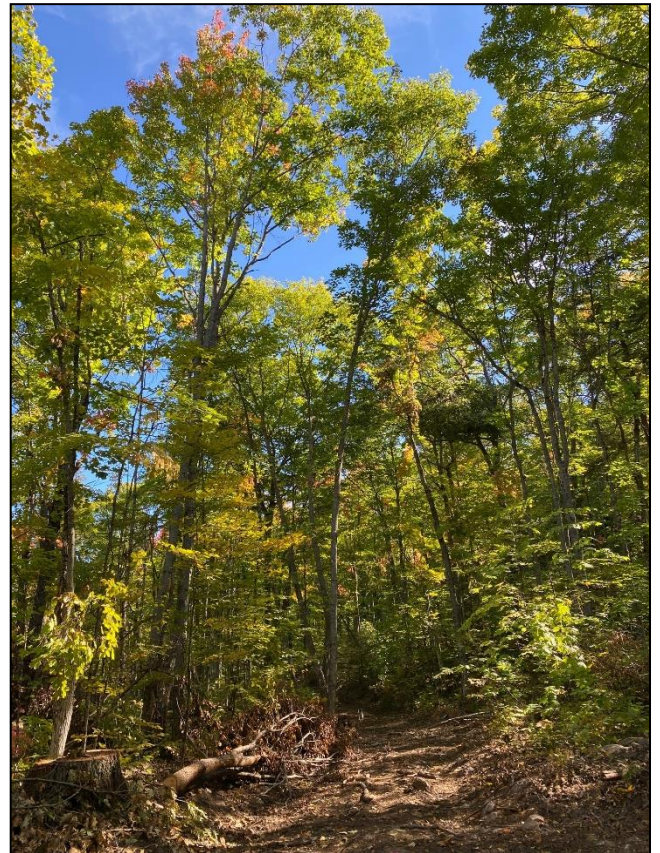


Figure 6. Post-harvest condition of an oak stand at Opeongo Tract. A bumper crop of acorns coincided with the harvest.