

COUNTY OF RENFREW

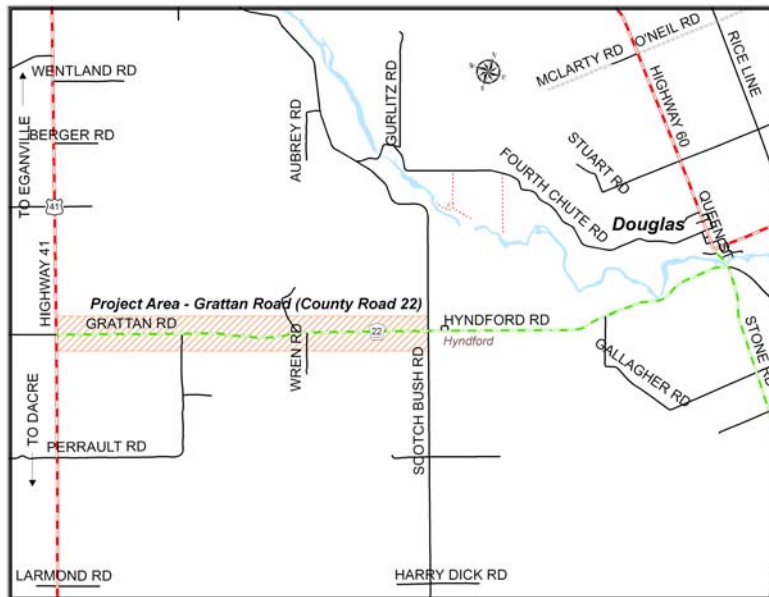


NOTICE OF INVITATION TO COMMENT

COUNTY ROAD 22 (Grattan Road) From Highway 41 to Scotch Bush Road Township of Bonnechere Valley

The Process

The County of Renfrew has initiated a preliminary design study for County Road 22 (Grattan Road) from Highway 41 to Scotch Bush Road. This section of road has been identified in the 10 year plan for repair or rehabilitation.



Key Map

Comments

The County of Renfrew is currently soliciting input regarding the nature and extent of the repairs to be considered. We are interested in hearing any comments you may have. Written comments will be received until March 27, 2009. To provide written comments or for further information on this project, please contact:

Michael C. Pinet, P. Eng.
Manager of Capital Works
Department of Public Works & Engineering
County of Renfrew
9 International Drive
Pembroke, ON K8A 6W5
Email: mpinet@countyofrenfrew.on.ca

Dave J. Darch, P. Eng.
Director of Public Works & Engineering
Department of Public Works & Engineering
County of Renfrew
9 International Drive
Pembroke, ON K8A 6W5
Email: ddarch@countyofrenfrew.on.ca

For more information on County of Renfrew projects, please visit the County of Renfrew, Public Works & Engineering Website.

Phone: 1-800-273-0183 or 613-732-4353 Fax: 613-732-0087

Web: www.countyofrenfrew.on.ca

Any information or comments received pertaining to this design study (including your name and address), form part of the public record and may be disclosed/made available by the County to such persons as the County sees fit, including anyone requesting such information. Accordingly, in providing any such information, you shall be deemed to have consented to its use and disclosure as part of this planning process.

This noticed issued February 23, 2009.