

COUNTY OF RENFREW



NOTICE OF PUBLIC OPEN HOUSE

COUNTY ROAD 68 (Letterkenny Road) from Rockingham Road to County Road 66

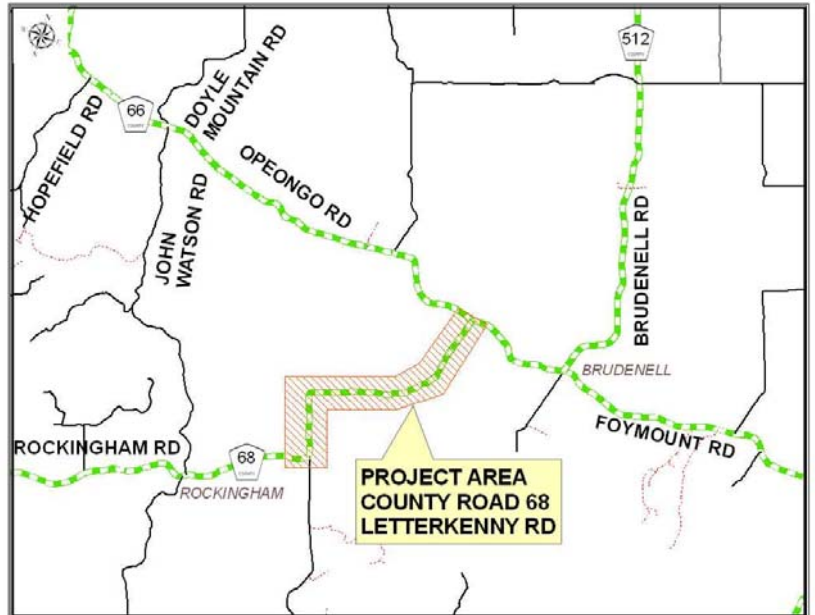
The County of Renfrew has initiated the Detail Design for the reconstruction/rehabilitation of County Road 68 (Letterkenny Road) from Rockingham Road to County Road 66, a distance of approximately 5.13 kilometres. The Engineering consulting firm of Robinson Consultants has been retained by the County of Renfrew for the design of this project. This section of road is currently in poor condition and in need of repair or rehabilitation.

Key Map

This Project generally includes:

- Pavement rehabilitation;
- Pavement and shoulder widening to current County design standards;
- Vertical gradient corrections;
- Intersection improvements;
- Centerline, side road and entrance culvert replacements and extensions;
- Drainage improvements and;
- Roadside safety improvements

The purpose of the study is to identify the solution that best addresses these safety and operational related concerns while respecting the natural and socio-economic environments. A Public Open House has been planned as follows:



OPEN HOUSE

Date: Thursday November 26, 2009

Location: Raglan Recreation Centre

22 Burnt Bridge Road, Palmer Rapids, Ontario

Time: 5:00 p.m. – 9:00 p.m.

Presentation: 7:00 p.m.

At the Open House, you will have the opportunity to provide input on the following:

- Environmental Assessment Process;
- Existing Conditions;
- Preliminary Roadway Alternatives;
- Technically Preferred Alternatives; and
- Study Schedule

This project is being undertaken in accordance with the Municipal Class Environmental Assessment Schedule A+ process, subject to the results of this consultation and screening. We encourage comments from individuals, groups, and the general public at any time during the EA process. Any information or comments received pertaining to this Environmental Assessment study, including name and address, form part of the public record and may be disclosed/made available by the County to such persons as the County sees fit. Accordingly, in providing any such information, you shall be deemed to have consented to its use and disclosure as part of this planning process. Regular updates and information for this study and for other County of Renfrew road improvement projects can be obtained through the Environmental Studies link on the County's Public Works and Engineering web page at <http://www.countyofrenfrew.on.ca/publicworks.htm>

For more information, or if you wish to be placed on the study's mailing list, please contact:

Michael C. Pinet, P. Eng.
Manager of Capital Works
Department of Public Works & Engineering
County of Renfrew
9 International Drive
Pembroke, ON K8A 6W5
Phone: (613) 732-4353
Toll Free: 1-800-273-0183
Fax: (613) 732-0087
Email: mpinet@countyofrenfrew.on.ca

Brian Rogers, P.Eng.
Project Manager
Robinson Consultants Inc.
350 Palladium Drive
Kanata, ON K2V 1A8
Phone: (613) 592-6060
Fax: (613) 592-5995
Email: brogers@rcii.com