

# 2019 ANNUAL REPORT FOR ACTIVITIES IN RENFREW COUNTY FOREST

PREPARED BY L. ROSE, R.P.F., ON FEBRUARY 20, 2020

## HARVEST

Timber sales for 2019 harvest activities were advertised in October 2018. Successful bids were received for five of six sales. The sale that did not receive bids – Opeongo Line Tract (162ha), a mostly poplar clearcut area – represented almost half of the projected revenue for 2019. Opeongo Line Tract was re-advertised in Spring 2020, with a longer contract length (2.5 years to complete) and received an acceptable bid. No work took place at Opeongo Line Tract in 2019, which had an impact on budget achievement. An additional spruce and red pine plantation area was re-advertised in Spring 2020, for the 4<sup>th</sup> time, and also received a successful bid. Harvest of this area (Shrine Hill/Yantha, 19ha) will occur in 2020.

Most harvesting activities took place in the Fall and early Winter of 2019, with the exception of one block in March, due to species at risk timing restrictions in four out of five tendered blocks. No major operational issues occurred, but because of the limited timing window available for harvest, two blocks required an extension into January 2020 for hauling and/or harvest completion. As a result, some revenue for Maves Tract will apply to 2020. There were some minor challenges with delays from weather changing from dry to wet, and overlap with hunting season.

Approximately 18 people worked on the Renfrew County Forest (RCF) in 2019<sup>1</sup>, as a result of tendered harvest operations, cutting and skidding or forwarding wood, building roads, processing timber on site, supervising operations, and hauling logs to mills.

Two County of Renfrew staff completed all planning (timber cruising, analysis, prescription writing), tree marking, layout, tendering, wood measurement and operations monitoring activities.

Table 1. Summary of Tender and Harvest Activities for 2019

| Tract                 | Harvest Type             | Harvest Area (ha) | Harvest Volume (m3) | Revenue (\$)     |
|-----------------------|--------------------------|-------------------|---------------------|------------------|
| Marsh Road            | Red Pine Thinning        | 24                | 1,208               | 30,885.00        |
| Green Lake            | Red Pine Thinning        | 8                 | 548                 | 13,693.10        |
| Virgin Lake           | Red Pine/Spruce Thinning | 10                | 727                 | 13,119.11        |
| Barry's Bay           | Red Pine Thinning        | 17                | 1,102               | 33,060.92        |
| Maves                 | Red Pine/Spruce Thinning | 15                | 1,496               | 7,000.00         |
| <b>Total for 2019</b> |                          | <b>74</b>         | <b>5,081</b>        | <b>97,758.13</b> |

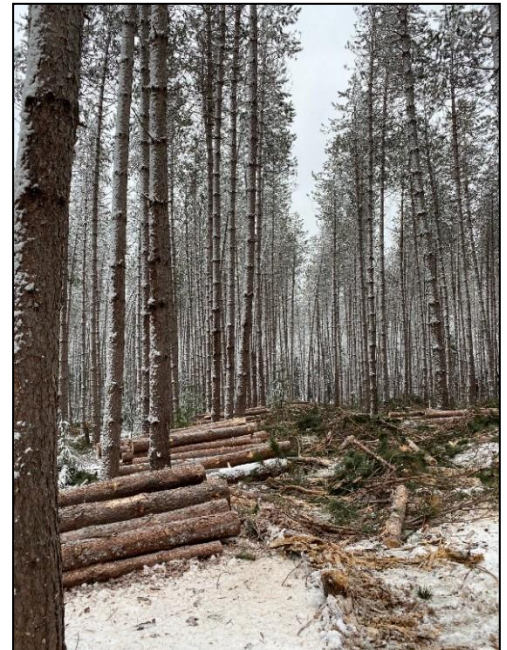


Figure 1. Thinning operation at Maves Tract, December.

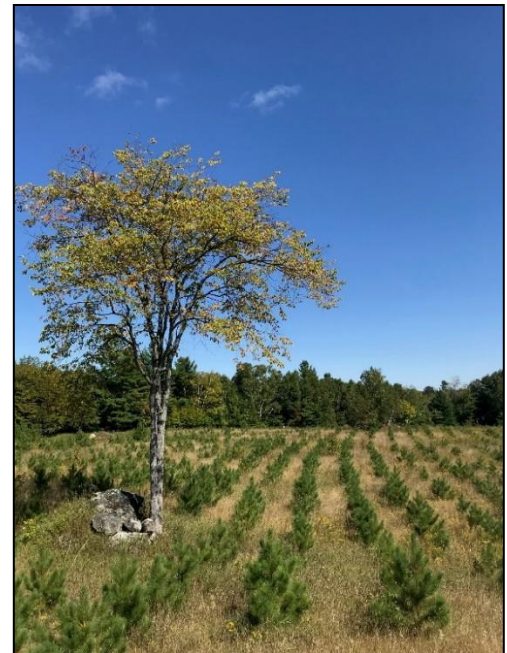


Figure 2. Sperberg Tract Plantation, 4 years old.

## RENEWAL

In 2019, 800 trees were planted by County of Renfrew Forestry staff at Byer's Creek at a cost of \$701.73, to finish area that had been planted in 2017-18. Tree plant areas from 2015-18 are being monitored annually to assess need for follow-up tending treatments.

County staff facilitated the planting of 150 trees by 30 volunteers at TD Tree Days held at the 150<sup>th</sup> Tract of the Renfrew County Forest. These trees were sponsored by TD Bank.

<sup>1</sup> During active operations, employed by successful bidders.

## EDUCATION & OUTREACH

Opportunities are taken to positively promote sustainable forest management that occurs on RCF, as well as in Renfrew County as a whole, when staff time permits.

- Staff presented to Algonquin College's Forestry Technician and Environmental Technician programs about Community Forestry and Renfrew County Forests.
- Three local classroom visits took place to talk about forestry in Renfrew County, and jobs in forestry, at kindergarten, grade 6 and grade 9 levels.
- Two education events for students occurred at Shaw Woods in May in partnership with local forestry stakeholders: Shaw Woods Forestry Day and Forestry Connects.
- In conjunction with the Forest Life Expo in June, 250 Renfrew-area school children attended a Forestry Learning day. They planted trees, learned how to compass, identify trees and plants and about sustainable forestry.
- The 111<sup>th</sup> Annual Conference of the Canadian Institute of Forestry (CIF) was held locally in October. 170 delegates from all over Canada, Spain and the United Kingdom attended. The County of Renfrew organized a field tour which included stops at Shaw Woods, an active harvest operation at a Renfrew County Forest, and a tour of Heideman's mill, with participation from the Algonquins of Ontario at two of three tour stops.
- Forestry staff participated as a career mentor at an event for local grade 9/10 students – World of Choices Renfrew County – hosted by Algonquin College in October.
- A presentation was given to the Deep River Horticultural Society about invasive species and the Town of Deep River's Forest Management Plan.

## OTHER

Invasive species continue to be a concern for forest health in Renfrew County. Beech Bark Disease continues to be found in RCF tracts. For the 4<sup>th</sup> year in a row, Emerald Ash Borer (EAB) traps were set in partnership with the Petawawa Research Forest and Canadian Nuclear Laboratories (CNL). Two of six traps set by County staff were positive for EAB this year, one at Shaw Woods and the other at Lake Dore, both beyond the areas previously mapped as infested. The first occurrence of garlic mustard in RCF was found by staff at Centennial Lake Tract. This will require several years of pulling and monitoring to control.

A student in Algonquin College's Forestry Technician program completed a 2-week co-op placement in forestry and trails with County staff.

The Renfrew County Forest (RCF) was audited in December to maintain our Forest Stewardship Council® (FSC®) certification (FSC® C018800) through the Eastern Ontario Model Forest's Forest Certification Program. The auditor visited two recent harvest operations on RCF with County Forestry staff, and reviewed the Forest Management Plan, Annual Reports and other documents associated with the management of RCF. The draft result is positive, with no non-conformances, notes or observations.

County staff, on behalf of the County, submitted comments on two postings on the Environmental Registry of Ontario: information for consideration in the development of recovery strategies for Blanding's Turtle and Eastern Whip-poor-will, and support for a review of the Endangered Species Act (ESA).

For the 5<sup>th</sup> year in a row, the University of Guelph completed tick surveys for research on RCF. The Renfrew County and District Health Unit (RCDHU) also surveyed several Tracts. Survey results at Chippior's Corner and Springtown by RCDHU led to these areas being identified as risk areas for Lyme disease.

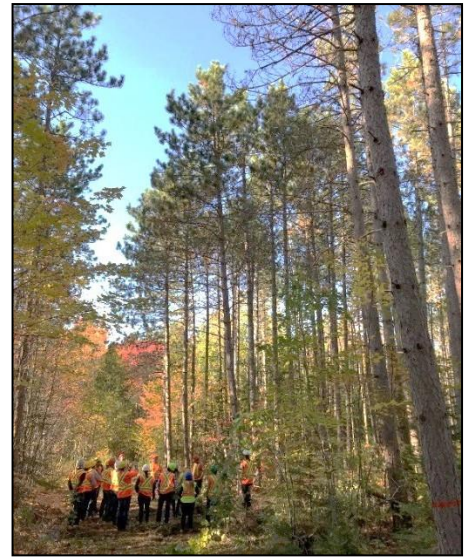


Figure 3. Attendees of 2019 CIF Conference at Marsh Road Tract.



Figure 4. Students taking a break from tree planting at the Forest Life Expo.



Figure 5. Hanging an EAB Trap at Shaw Woods.